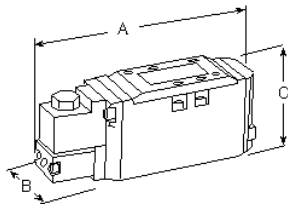


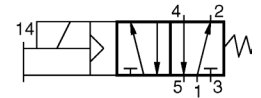
# W65 Spool and Sleeve Valves for ISO Bases (5599/II)

## 5/2 Valves – Single Solenoid Pilot

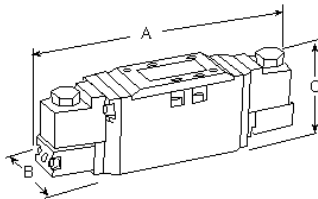


ISO Size	Avg. C <sub>v</sub>	Port Size	Valve Model Number	Weight kg
1	1.0	G 1/4 - G 3/8	W6576A2401	0.7
2	2.3	G 3/8 - G 1/2	W6576A3401	1.0
3	3.4	G 1/2 - G 3/4	W6576A4401	1.6

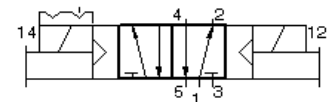
The W65 Series has a base electrical connector which eliminates the need to disconnect wires to remove the valve. This eliminates dropcords, simplifies maintenance and connection to Serial Data Communication systems. For more information, request Bulletin 379B.



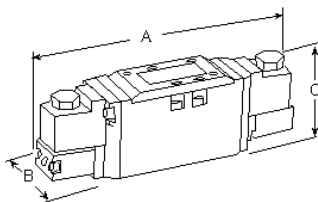
## 5/2 Valves – Double Solenoid Pilot



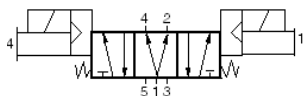
ISO Size	Avg. C <sub>v</sub>	Port Size	Valve Model Number	Weight kg
1	1.0	G 1/4 - G 3/8	W6576A2407	1.0
2	2.3	G 3/8 - G 1/2	W6576A3407	1.2
3	3.4	G 1/2 - G 3/4	W6576A4407	1.9



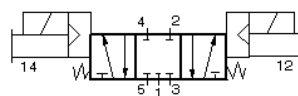
## 5/3 Valves – Double Solenoid Pilot



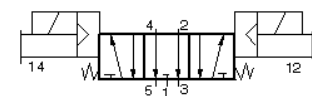
ISO Size	Avg. C <sub>v</sub>	Port Size	Valve Model Number			Weight kg
			Power Center	Closed Center	Open Center	
1	1.0	G 1/4 - G 3/8	W6577A2902	W6577A2401	W6577A2407	1.0
2	2.3	G 3/8 - G 1/2	W6577A3901	W6577A3401	W6577A3407	1.2
3	3.4	G 1/2 - G 3/4	W6577A4900	W6577A4401	W6577A4407	1.9



POWER CENTER



CLOSED CENTER



OPEN CENTER

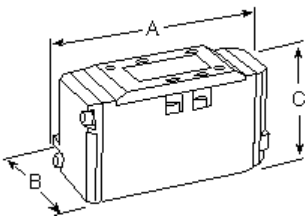
**STANDARD SPECIFICATIONS:** For valves on this page.  
**Solenoids:** Rated for continuous duty.  
 Standard voltages 100–110 volts 50 Hz; 100–120 volts 60 Hz; 24, 110 volts d.c.  
**Power Consumption:** Each solenoid. 6.5 VA holding on 50 or 60 Hz; 3.5 watts on d.c. (at 10 bar).  
**Ambient Temperature:** 4° to 50°C.  
**Media Temperature:** 4° to 80°C.

**Flow Media:** Filtered air. 5 micron recommended.  
**Inlet Pressure:** Standard- Size 1: 2-10 bar, Size 2: 1-10 bar, Size 3: 1-10 bar. All sizes available up to 16 bar.  
**Pilot Supply:** Internal/external supply selected automatically. Required pressure at least 2 bar.



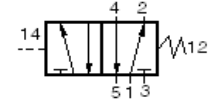
# W65 Spool and Sleeve Valves for ISO Bases (5599/II)

## 5/2 Valves – Single Remote Pressure Control Spring Return

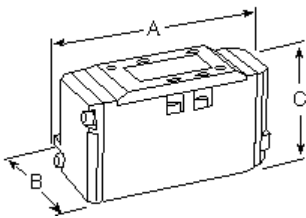


ISO Size	Avg. C <sub>v</sub>	Port Size	Valve Model Number*	Weight kg
1	1.0	G 1/4 - G 3/8	W6556A2411	0.4
2	2.3	G 3/8 - G 1/2	W6556A3411	0.7
3	3.4	G 1/2 - G 3/4	W6556A4411	1.4

\*Valve dimensions shown below.

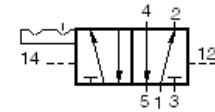


## 5/2 Valves – Double Remote Pressure Momentary Control

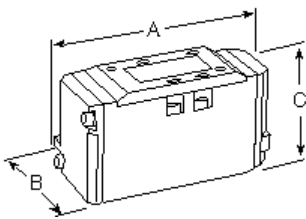


ISO Size	Avg. C <sub>v</sub>	Port Size	Valve Model Number*	Weight kg
1	1.0	G 1/4 - G 3/8	W6556A2417	0.4
2	2.3	G 3/8 - G 1/2	W6556A3417	0.7
3	3.4	G 1/2 - G 3/4	W6556A4417	1.4

\*Valve dimensions shown below.

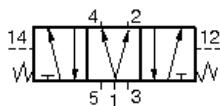


## 5/3 Valves – Double Remote Pressure Control

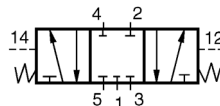


ISO Size	Avg. C <sub>v</sub>	Port Size	Valve Model Number*			Weight kg
			Power Center	Closed Center	Open Center	
1	1.0	G 1/4 - G 3/8	—	W6557A2411	W6557A2417	0.5
2	2.3	G 3/8 - G 1/2	W6557A3901	W6557A3411	W6557A3417	0.7
3	3.4	G 1/2 - G 3/4	W6557A4900	W6557A4411	W6557A4417	1.4

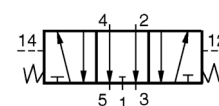
\*Valve dimensions shown below.



POWER CENTER



CLOSED CENTER



OPEN CENTER

### DIMENSIONS mm

Type	Size	A	B	C
Sgl. Sol.	1	161	41	69
Sgl. Sol.	2	186	52	71
Sgl. Sol.	3	216	67	78
Dbl. Sol.	1	224	41	69
Dbl. Sol.	2	228	52	71
Dbl. Sol.	3	254	67	79
Rem. Pressure	1	121	41	68
Rem. Pressure	2	148	52	71
Rem. Pressure	3	178	67	79

**STANDARD SPECIFICATIONS:** For valves on this page.

**Ambient Temperature:** 4° to 80°C.

**Media Temperature:** 4° to 80°C.

**Flow Media:** Filtered air. 5 micron recommended.

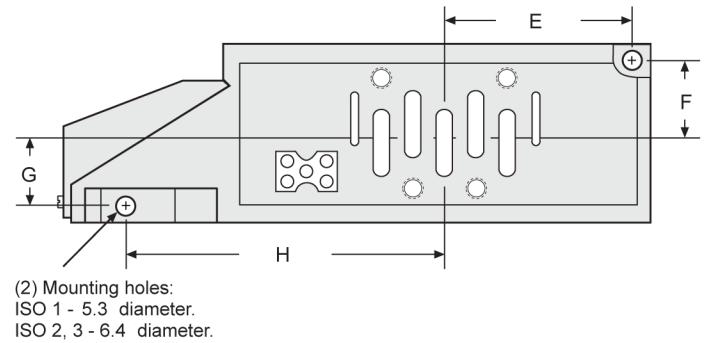
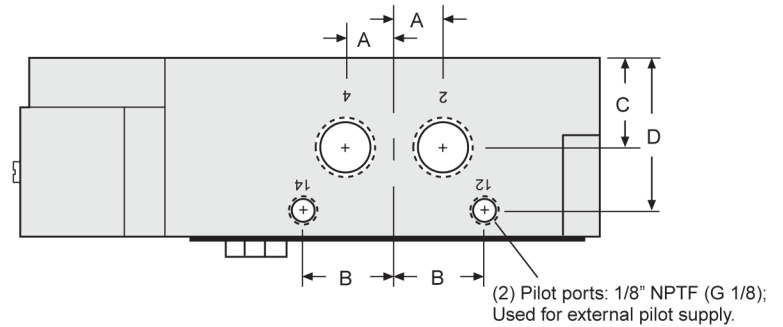
**Inlet Pressure:** Standard-Size 1: 2-10 bar, Size 2: 1-10 bar, Size 3: 1-10 bar. All sizes available up to 16 bar.

**Pilot Supply:** Internal/external supply selected automatically. Required pressure at least 2 bar.

# Bases for W65 ISO Valves (5599/II)

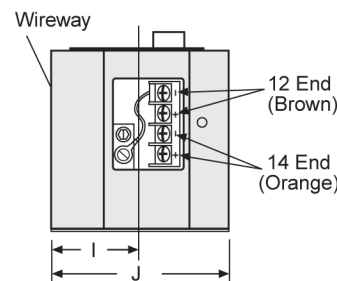
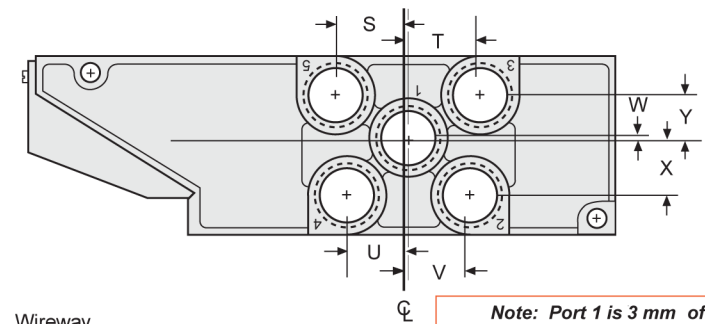
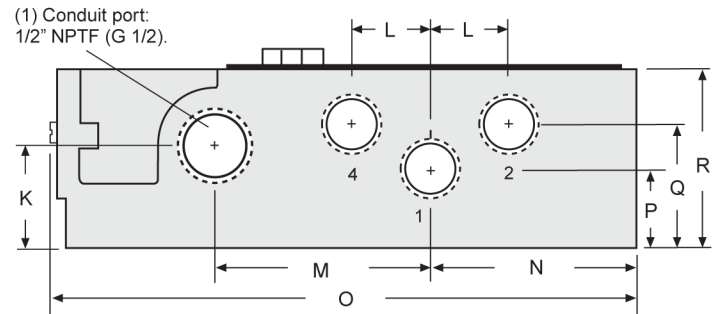
## Side and Bottom-Ported Bases

ISO Size	Port Size	Base Station Model Number
ISO 1	1/4 NPTF Side	949N91
	1/4 NPTF Side/Bottom	971N91
	3/8 NPTF Side	950N91
	3/8 NPTF Side/Bottom	972N91
	G 1/4 Side	D949N91
	G 3/8 Side	D950N91
ISO 2	3/8 NPTF Side	951N91
	3/8 NPTF Side/Bottom	952N91
	1/2 NPTF Side	953N91
	1/2 NPTF Side/Bottom	954N91
	G 1/2 Side	D953N91
ISO 3	1/2" NPTF Side	955N91
	1/2" NPTF Side/Bottom	956N91
	3/4" NPTF Side	957N91
	3/4" NPTF Side/Bottom	958N91
	G 1/2 Side	D955N91
	G 1/2 Side/Bottom	D956N91
	G 3/4 Side	D957N91
G 3/4 Side/Bottom	D958N91	



### Base Dimensions mm

	ISO 1	ISO 2	ISO 3
A	13	16	21
B	26	33	45
C	21	31	34
D	38	49	70
E	39	57	63
F	23	29	39
G	23	29	36
H	92	108	137
I	29	35	45
J	58	70	90
K	24	37	47
L	22	27	38
M	60	75	104
N	46	64	69
O	164	197	235
P	21	28	34
Q	34	44	51
R	47	60	85
S	21	27	42
T	27	27	42
U	13	22	27
V	15	22	27
W	8	3	20
X	17	20	20
Y	16	20	20



**Assembled manifolds also available. Consult ROSS.**

# Manifolds for W65 ISO Valves (5599/II)

## Bottom or End-Ported Manifolds

Manifold Dimensions mm

	ISO 1	ISO 2	ISO 3
<b>A</b>	183	229	270
<b>B</b>	125	152	180
<b>C</b>	26	33	43
<b>D</b>	79	100	128
<b>E</b>	14	16	15
<b>F</b>	14	17	26
<b>G</b>	34	42	46
<b>H</b>	25	30	31
<b>I</b>	28	35	52
<b>J</b>	64	79	104
<b>K</b>	31	40	42
<b>L</b>	22	25	30
<b>M</b>	13	16	21
<b>N</b>	53	67	86
<b>O</b>	55	66	78
<b>P</b>	16	22	20
<b>Q</b>	13	15	18
<b>R</b>	13	15	21
<b>S</b>	7	8	13
<b>T</b>	7	8	12
<b>U</b>	51	67	79
<b>V</b>	-	26	32

### End Station Kit Numbers

Series	Port Size	Part No.
ISO 1	3/8" NPTF	493N86
	G 3/8	D493N86
ISO 2	1/2" NPTF	494N86
	G 1/2	D494N86
ISO 3	1" NPTF	495N86
	G 1	D495N86

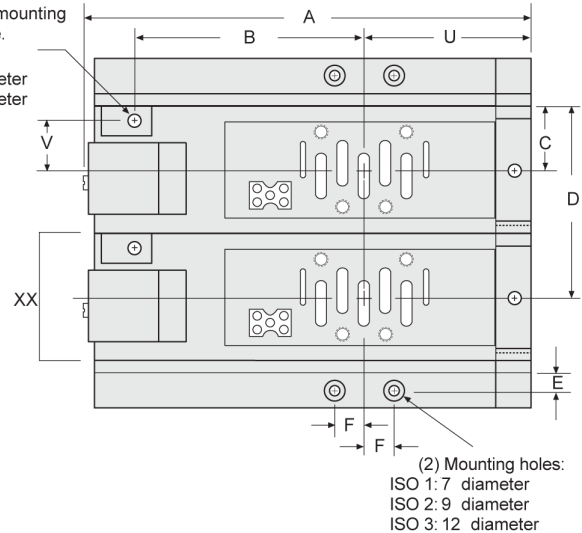
\* Each end station kit includes left and right end plates, socket head screws, nuts and seals.

### Manifold Station Assembly Numbers

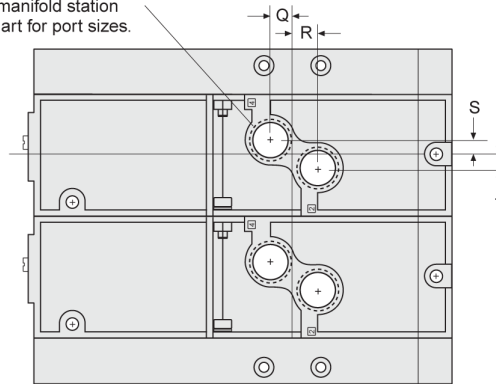
Series	Port Size	Part No.
ISO 1	1/4" NPTF End/Bottom	959N91
	3/8" NPTF End/Bottom	960N91
	G 1/4 End/Bottom	D959N91
	G 3/8 End/Bottom	D960N91
ISO 2	3/8" NPTF End/Bottom	961N91
	1/2" NPTF End/Bottom	962N91
	G 3/8 End/Bottom	D961N91
	G 1/2 End/Bottom	D962N91
ISO 3	1/2" NPTF End/Bottom	963N91
	3/4" NPTF End/Bottom	964N91
	G 1/2 End/Bottom	D963N91
	G 3/4 End/Bottom	D964N91

\* Each Manifold Station Assembly includes a manifold assembly, socket head screws, nuts and seals.

ISO Size 1 uses mounting holes in end plate.  
Mounting hole:  
Size 2: 7.1 diameter  
Size 3: 8.4 diameter

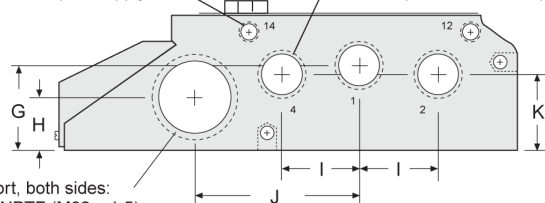


Bottom cylinder ports;  
See manifold station  
kit chart for port sizes.



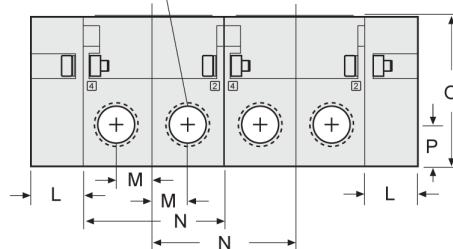
(2) Pilot ports: 1/8" NPTF (G 1/8);  
Used for external pilot supply.

(3) Side ports, both sides;  
See end plate kit chart for port sizes.

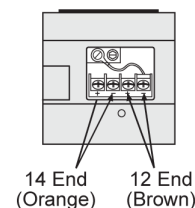


Conduit port, both sides:  
ISO 1 - 1" NPTF (M32 x 1.5)  
ISO 2, 3 - 1 1/4" NPTF (M40 x 1.5)

(2) Side cylinder ports: See manifold  
block kit chart for port sizes



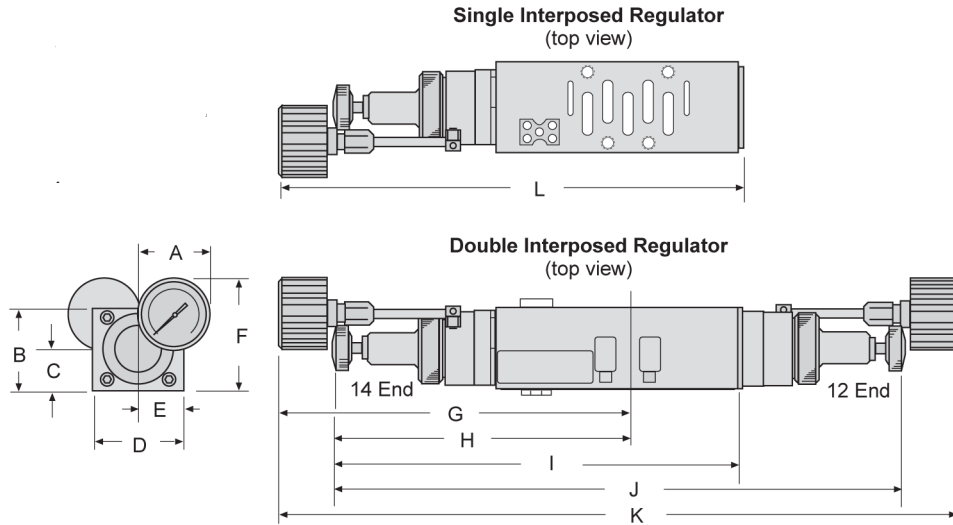
View XX with conduit  
cover removed



# Accessories for Series W65 ISO Valves (5599/II)

## Interposed Regulators

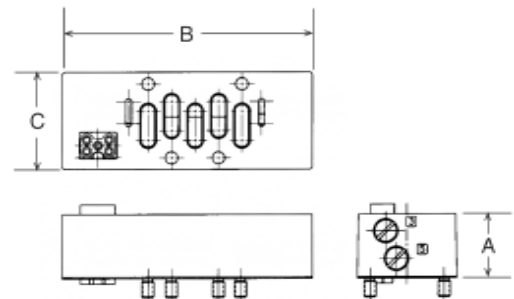
The Interposed Regulator controls the pressure through the base-mounted valve. These interposed devices are “sandwich” style, mounting between a valve and base or manifold. When using an interposed regulator for a Series 65 double solenoid valve, the valve **must be externally piloted**.



ISO-Size	Model-No.	A	B	C	D	E	F	G	H	I	J	K	L
1 (Single)	965N91	39	45	23	43	22	63	157	182	204	295	345	229
1 (Double)	966N91	39	45	23	43	22	63	157	182	204	295	345	229
2 (Single)	967N91	39	45	23	51	26	63	166	191	229	320	370	254
2 (Double)	968N91	39	45	23	51	26	63	166	191	229	320	370	254
3 (Single)	969N91	39	67	34	66	33	85	242	203	270	463	386	330
3 (Double)	970N91	39	67	34	66	33	85	242	203	270	463	386	330

## Flow Control Kits

The interposed flow control independently adjusts the speed of a cylinder's extend and retract motions. This action is achieved by throttling the flow of exhaust air through ports 3 and 5 by means of a separate needle valve across each of these ports. These interposed devices are “sandwich” style, mounting between a valve and a base or manifold.



ISO Size	Part Number	Dimensions mm		
		A	B	C
1	1371N77	24	97	43
2	1372N77	33	130	51
3	1373N77	41	142	66

## Transition Plates:

To bank different manifold sizes together.

### ISO 1 to ISO 2

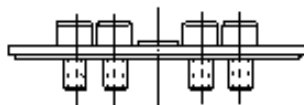
Left to right ..... 1387N77  
Right to left ..... 1388N77

### ISO 2 to ISO 3

Left to right ..... 1389N77  
Right to left ..... 1390N77

## Blank Station Kits

A blank station plate is used to cover the top of a manifold station not in use.



ISO Size	Part Number
1	1381N77
2	1382N77
3	1383N77

## Pilot Port Blocking Plug

The pilot blocking plug blocks the pilot ports between manifold stations.



ISO Size	Part Number
1	1375N77
2	1377N77
3	1379N77

## Blocking Disk Kits

A blocking disk closes the ports between manifold stations.



ISO Size	Part Number
1	1376N77
2	1378N77
3	1380N77