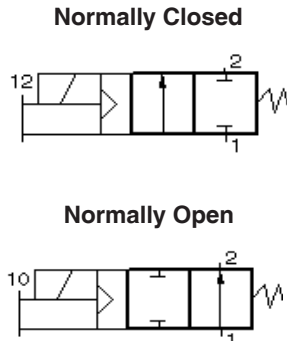
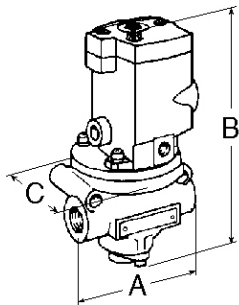


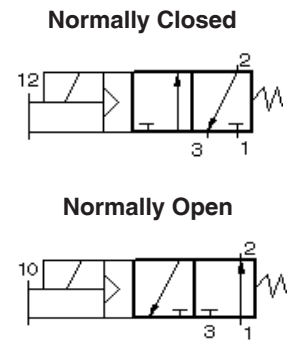
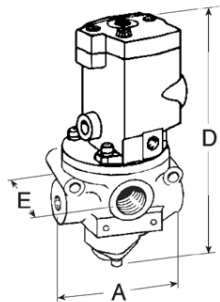
Series 27 Single Solenoid Pilot Inline Valves

2/2 Valves



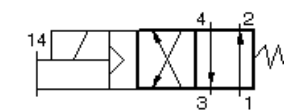
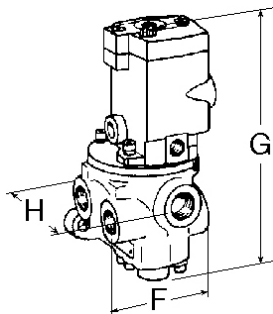
Port Size	Valve Model Numbers		Average k_v		Weight kg
	Normally Closed	Normally Open	N.C.	N.O.	
G 1/4	D2771B2001	D2772B2001	2,0	2,0	
G 3/8	D2771B3001	D2772B3001	3,3	2,9	1,1
G 1/2	D2771B4011	D2772B4011	3,5	3,1	
G 1/2	D2771B4001	D2772B4001	6,7	5,7	
G 3/4	D2771B5001	D2772B5001	7,9	6,4	1,5
G 1	D2771B6011	D2772B6011	7,9	6,9	
G 1	D2771B6001	D2772B6001	21	18	
G 1-1/4	D2771B7001	D2772B7001	25	17	3,2
G 1-1/2	D2771B8011	D2772B8011	25	18	
G 1-1/2	D2771B8001	D2772B8001	43	43	
G 2	D2771B9001	D2772B9001	50	50	6,9
G 2-1/2	D2771B9011	D2772B9011	56	63	

3/2 Valves



Port Sizes		Valve Model Numbers		Average k_v		Weight kg
In-Out	Exh.	Normally Closed	Normally Open	N.C.	N.O.	
G 1/4	G 1/2	D2773B2001	D2774B2001	2,4	2,2	
G 3/8	G 1/2	D2773B3001	D2774B3001	3,9	2,6	1,1
G 1/2	G 1/2	D2773B4011	D2774B4011	3,8	2,6	
G 1/2	G 1	D2773B4001	D2774B4001	6,8	6,2	
G 3/4	G 1	D2773B5001	D2774B5001	8,2	6,2	1,5
G 1	G 1	D2773B6011	D2774B6011	8,7	6,2	
G 1	G 1-1/2	D2773B6001	D2774B6001	25	18	
G 1-1/4	G 1-1/2	D2773B7001	D2774B7001	27	19	3,2
G 1-1/2	G 1-1/2	D2773B8011	D2774B8011	27	18	
G 1-1/2	G 2-1/2	D2773B8001	D2774B8001	60	51	
G 2	G 2-1/2	D2773B9001	D2774B9001	61	52	7,4
G 2-1/2	G 2-1/2	D2773B9011	D2774B9011	62	48	

4/2 Valves



Port Sizes		Valve Model Numbers	Average k_v	Weight kg
In-Out	Exhaust			
G 1/4	G 1/2	D2776B2001	2,2	
G 3/8	G 1/2	D2776B3001	3,1	1,4
G 1/2	G 1/2	D2776B4011	3,2	
G 1/2	G 1	D2776B4001	6,0	
G 3/4	G 1	D2776B5001	7,1	2,4
G 1	G 1	D2776B6011	7,8	
G 1	G 1-1/2	D2776B6001	20	
G 1-1/4	G 1-1/2	D2776B7001	21	5,1
G 1-1/2	G 1-1/2	D2776B8011	21	

DIMENSIONS mm

Port Size	A	B	C	D	E	F	G	H
G 1/4 to G 1/2	90	175	79	181	79	99	191	99
G 1/2 to G 1	116	193	79	201	91	117	241	134
G 1 to G 1-1/2	168	263	104	263	123	165	274	211
G 1-1/2 to G 2-1/2	219	300	130	313	161	—	—	—

STANDARD SPECIFICATIONS: For valves on this page.

Solenoids: AC or DC power. See page 3 for voltages.

Power Consumption: 87 VA inrush, 30 VA holding on 50 or 60 Hz; 14 watts on DC.

Ambient Temperature: 4° to 50°C.

Media Temperature: 4° to 80°C.

Flow Media: Filtered air. 5 micron recommended.

Inlet Pressure:

G 1/4 to G 1-1/2 Port Sizes: 1 to 10 bar.

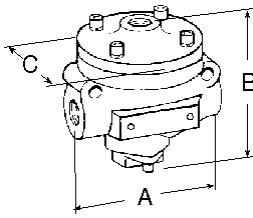
G 1-1/2 G to 2-1/2 Port Sizes: 2 to 10 bar.

Pilot Pressure: When external supply is used, pressure must be equal to or greater than inlet pressure.

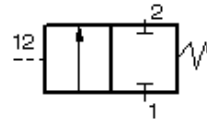
Threads: BSPP. (For NPT threads, consult ROSS).

Series 27 Remote Air Pilot Inline Valves

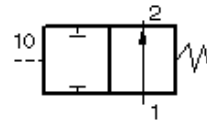
2/2 Valves



Normally Closed

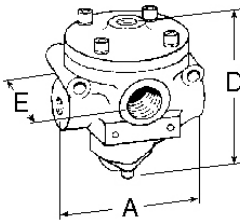


Normally Open

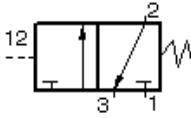


Port Size	Valve Model Numbers		Average k_v		Weight kg
	Normally Closed	Normally Open	N.C.	N.O.	
G 1/4	D2751A2001	D2752A2001	2,0	2,0	
G 3/8	D2751A3001	D2752A3001	3,3	2,9	0,6
G 1/2	D2751A4011	D2752A4011	3,5	3,1	
G 1/2	D2751A4001	D2752A4001	6,7	5,7	
G 3/4	D2751A5001	D2752A5001	7,9	6,4	0,9
G 1	D2751A6011	D2752A6011	7,9	6,9	
G 1	D2751A6001	D2752A6001	21	18	
G 1-1/4	D2751A7001	D2752A7001	25	17	3,6
G 1-1/2	D2751A8011	D2752A8011	25	18	
G 1-1/2	D2751A8001	D2752A8001	43	43	
G 2	D2751A9001	D2752A9001	50	50	6,4
G 2-1/2	D2751A9011	D2752A9011	56	63	

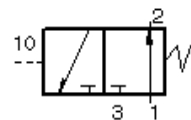
3/2 Valves



Normally Closed

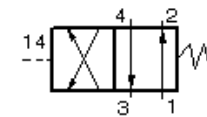
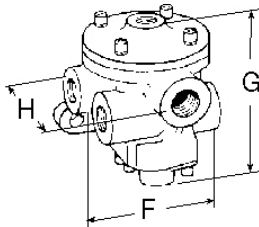


Normally Open



Port Sizes		Valve Model Numbers		Average k_v		Weight kg
In-Out	Exh.	Normally Closed	Normally Open	N.C.	N.O.	
G 1/4	G 1/2	D2753A2001	D2754A2001	2,4	2,2	
G 3/8	G 1/2	D2753A3001	D2754A3001	3,9	2,6	0,6
G 1/2	G 1/2	D2753A4011	D2754A4011	3,8	2,6	
G 1/2	G 1	D2753A4001	D2754A4001	6,8	6,2	
G 3/4	G 1	D2753A5001	D2754A5001	8,2	6,2	0,9
G 1	G 1	D2753A6011	D2754A6011	8,7	6,2	
G 1	G 1-1/2	D2753A6001	D2754A6001	25	18	
G 1-1/4	G 1-1/2	D2753A7001	D2754A7001	27	19	2,7
G 1-1/2	G 1-1/2	D2753A8011	D2754A8011	27	18	
G 1-1/2	G 2-1/2	D2753A8001	D2754A8001	60	51	
G 2	G 2-1/2	D2753A9001	D2754A9001	61	52	6,9
G 2-1/2	G 2-1/2	D2753A9011	D2754A9011	62	48	

4/2 Valves



Port Sizes		Valve Model Numbers	Average k_v	Weight kg
In-Out	Exhaust			
G 1/4	G 1/2	D2756A2001	2,2	
G 3/8	G 1/2	D2756A3001	3,1	0,8
G 1/2	G 1/2	D2756A4011	3,2	
G 1/2	G 1	D2756A4001	6,0	
G 3/4	G 1	D2756A5001	7,1	1,9
G 1	G 1	D2756A6011	7,8	
G 1	G 1-1/2	D2756A6001	20	
G 1-1/4	G 1-1/2	D2756A7001	21	4,6
G 1-1/2	G 1-1/2	D2756A8011	21	

DIMENSIONS mm

Port Size	A	B	C	D	E	F	G	H
G 1/4 to G 1/2	90	94	77	101	79	99	101	99
G 1/2 to G 1	116	112	77	120	91	117	147	134
G 1 to G 1-1/2	168	188	104	188	123	165	190	211
G 1-1/2 to G 2-1/2	219	231	130	240	161	165	198	208

STANDARD SPECIFICATIONS:

For valves on this page.

Ambient/Media Temperature: 4° to 80°C.

Flow Media: Filtered air. 5 micron recommended.

Inlet Pressure:

G 1/4 to G 1-1/2 Port Sizes: 1 to 10 bar.

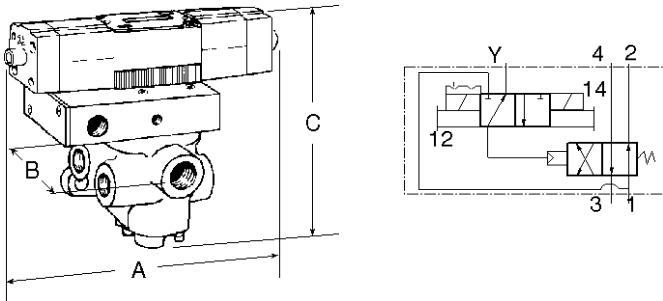
G 1-1/2 to G 2-1/2 Port Sizes: 2 to 10 bar.

Pilot Pressure: Must be equal to or greater than inlet pressure.

Threads: BSPP. (For NPT threads, consult ROSS).

Series 27 Double Solenoid Pilot Inline Valves

4/2 Valves



DIMENSIONS mm

Port Size	A	B	C
G 1/4 to G 1/2	239	99	201
G 1/2 to G 1	239	134	246
G 1 to G 1-1/2	239	208	295

Port Sizes		Valve Model	Average k_v	Weight kg
In-Out	Exhaust	Numbers		
G 1/4	G 1/2	D2776B2003	2,2	1,8
G 3/8	G 1/2	D2776B3003	3,1	
G 1/2	G 1/2	D2776B4013	3,2	
G 1/2	G 1	D2776B4003	6,0	2,8
G 3/4	G 1	D2776B5003	7,1	
G 1	G 1	D2776B6013	7,8	
G 1	G 1-1/2	D2776B6003	20	5,5
G 1-1/4	G 1-1/2	D2776B7003	21	
G 1-1/2	G 1-1/2	D2776B8013	21	

STANDARD SPECIFICATIONS: For valves on this page.

Solenoids: AC or DC power.

Power Consumption: Each solenoid; 190 VA inrush, 40 VA holding on 50 or 60 Hz; 20 watts on DC.

Indicator Lights: In each solenoid housing.

Ambient Temperature: 4° to 50°C.

Media Temperature: 4° to 80°C.

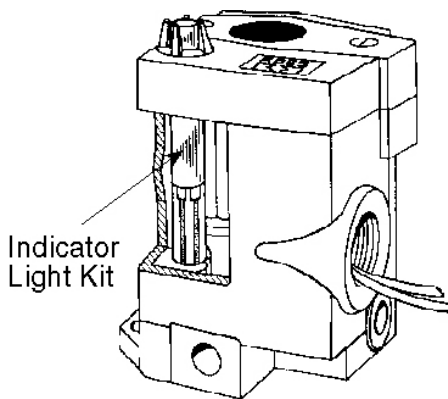
Flow Media: Filtered air. 5 micron recommended.

Inlet Pressure: 1 to 10 bar.

Pilot Pressure: If external supply is used, pressure must be equal to or greater than inlet pressure.

Threads: BSPP. (For NPT threads, consult ROSS).

Indicator Light Kit



An indicator light extends through the solenoid or pilot cover and is illuminated when the solenoid is energized. Such lights are standard on double solenoid valves in Series 21 and 27.

An indicator light is available in kit form for single solenoid models in Series 16, Series 21 (type O only), and Series 27. Order kit number **862K87** and specify the voltage of the solenoid.

Manual Override Kits

Flush flexible manual overrides are standard on single solenoid models in Series 16 and Series 27. Double solenoid models in Series 21 and 27 have flush metal-button overrides. Both types are non-locking.

Each of the buttons in the override kits below is made of metal and is spring-returned. The locking type button, however, can be kept in the actuated position by turning the slot in the top of the button with a screwdriver.

Order by the kit numbers shown below.



FLUSH BUTTON

Locking type Kit **792K87**
Non-locking type..... Kit **790K87**

EXTENDED BUTTON WITH PALM ACTUATOR

Non-locking type
Kit **984H87**



EXTENDED BUTTON

Non-locking type
Kit **791K87**

